

SELF-SERVICE CAR WASH

Car wash installations



SELF-SERVICE CAR WASH

GUIDANCE, CONSULTANCY & PROJECT REALISATION

PROJECT

As an experienced partner within the car wash branch DiBO counsels its clients during the entire process for both new-construction as renovations projects.



Preliminary study:

- Proposal for the construction site (washing places, vacuum cleaner islands, parking spaces, construction entries and exits, green areas, etc.)
- Pre-design
- Determination of the type and model of self-service car wash
- Technical design of the car wash

Applications for legal permits:

- Environmental permits
- Construction permits
- Exploitation permits
- Drawing of the building plan

Consultancy & guidance with respect to environmental norms

- Carry out noise pollution studies
- Consultancy concerning applicable water techniques
- Calling in an environmental coordinator
- Support to the government bodies

Financial consultancy:

- Evaluation of the commercial value of the location

- Assessment of the competitiveness
- Grounds value
- Potentially present clients

Efficiency study with regard to the planned investment:

- Forecast for the turnover and net results
- Taking into account the:

- Investment
- Maintenance costs
- Exploitation costs
- Depreciation

According to the permits granted and the building plans, the necessary works are implemented.



Planning:

- Groundwork
- Construction
- Washing installation
- Accessories
- Aftersales

DiBO takes care of the organisation and the coordination of the different operations.



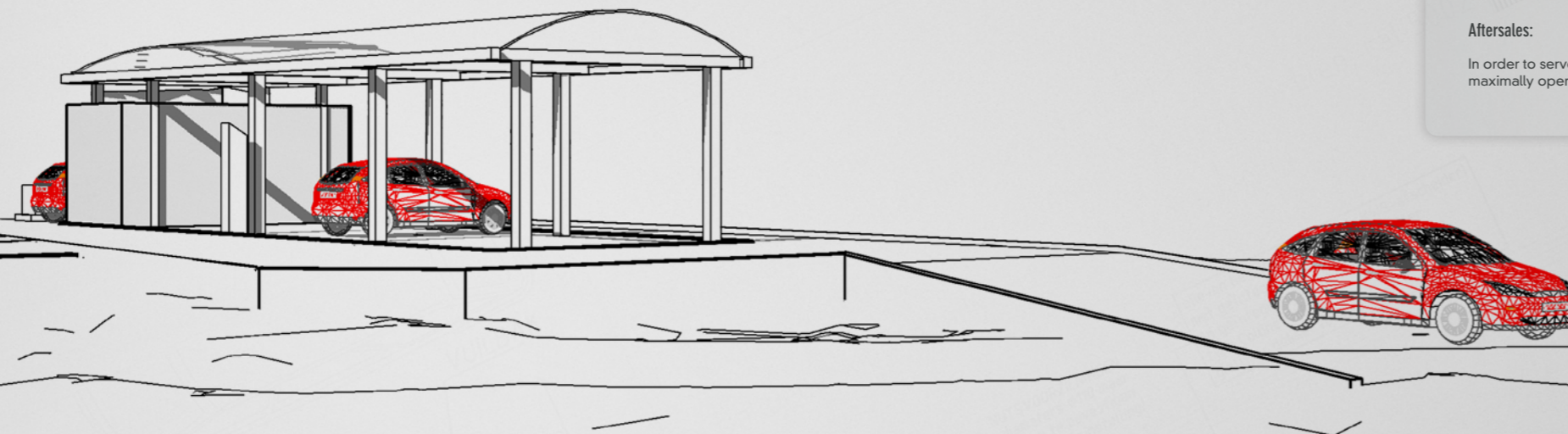
Groundwork:

- Preparing the building site
- Insulation plates and hoses for floor heating
- Drain pipes and conduits for the utilities
- Pipes for coin exhaust system (optional)
- Concrete floor for the washing places
- Stainless steel sumps for the silt collection

- Collection and recycling of the rainwater, rainwater drainage
- Frost protection system

Aftersales:

In order to serve you optimally DiBO offers its clients a customized maintenance contract. This way your installation stays maximally operational at all times.



SELF-SERVICE CAR WASH

GUIDANCE, CONSULTANCY & PROJECT REALISATION

Washing technologies: thanks to its own R&D department DiBO implements the most modern techniques in its self-service car wash systems. With a view to the maximum return of the self-service car wash DiBO attaches great importance to the quality of the applied technologies.

WASHVISION

All-in-one car wash concept where no separate technical room needs to be built, all technical components are incorporated in the support pillars of the car wash building.



Construction:

- Standard available with 1 or 2 washing places
- The high-quality look of the construction contributes to the success of the self-service car wash
- The building is completely in stainless steel with transparent UV-proof roof panels and tinted and hardened glass (vandal proof) separation walls between the washing places.



Construction possibilities for the support pillars:

- Standard:
 - High pressure installation
 - In combination with:
 - Water treatment installation with water softener and reverse osmosis unit

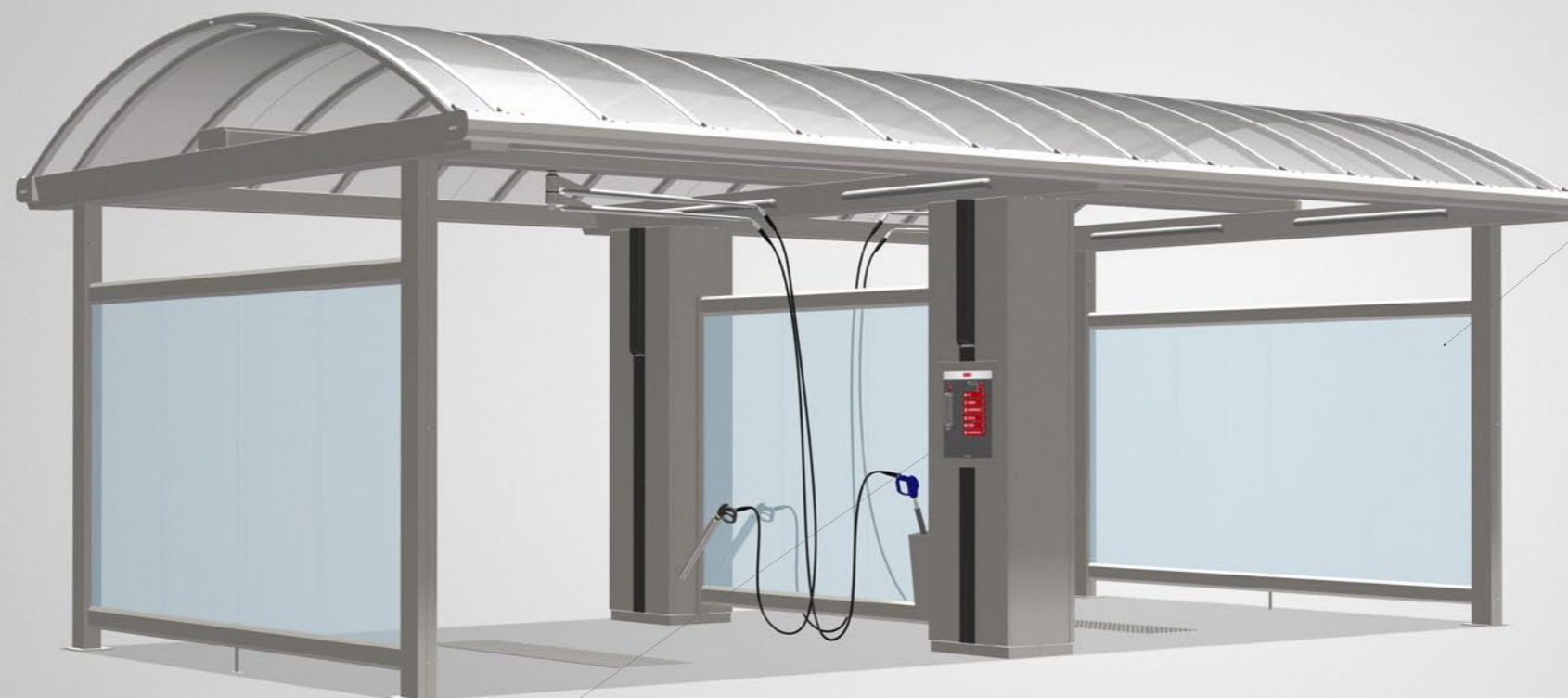
OR

 - Vacuum cleaner with turbine engine (1350 W or 2250 W) with electronic coin selection in single phase or 3-phase
- OR
- Extra chemical reservoir: 2 tanks of 135l (shampoo and wax) and 1 tank of 190l and extra dosing pump inclusive



Advantages:

- Ideal for optimisation and supplementary point of attraction for petrol stations, taxi companies, garages, ...
- Very quick and simple realisation and installation within 3 days, once the water- and electricity connections are provided



CUSTOM-BUILT

A made-to-measure, custom-built construction is possible, discuss your wishes with us.

- Extra support pillars for technical components
- Reinforced roof for snow ballast
- Closed back wall



Operation:

- The command panel is integrated in the support pillar of the building
- 7 wash programmes



Frost protection

- Open frost protection system
- Closed frost protection system
- Support pillar heating



Renovation works:

- Easy integration into an existing location
- Not necessary to build a separate technical room
- Extension of the existing self-service car wash
- ...

SELF-SERVICE CAR WASH

GUIDANCE, CONSULTANCY & PROJECT REALISATION

NEW 2000

Self-service car wash where the washing installation is placed in a separate technical room. The stainless steel building can be realized for 2 up to x numbers of washing places. For the command panel there is a choice to integrate it in the support pillars of the building or in detached control posts.



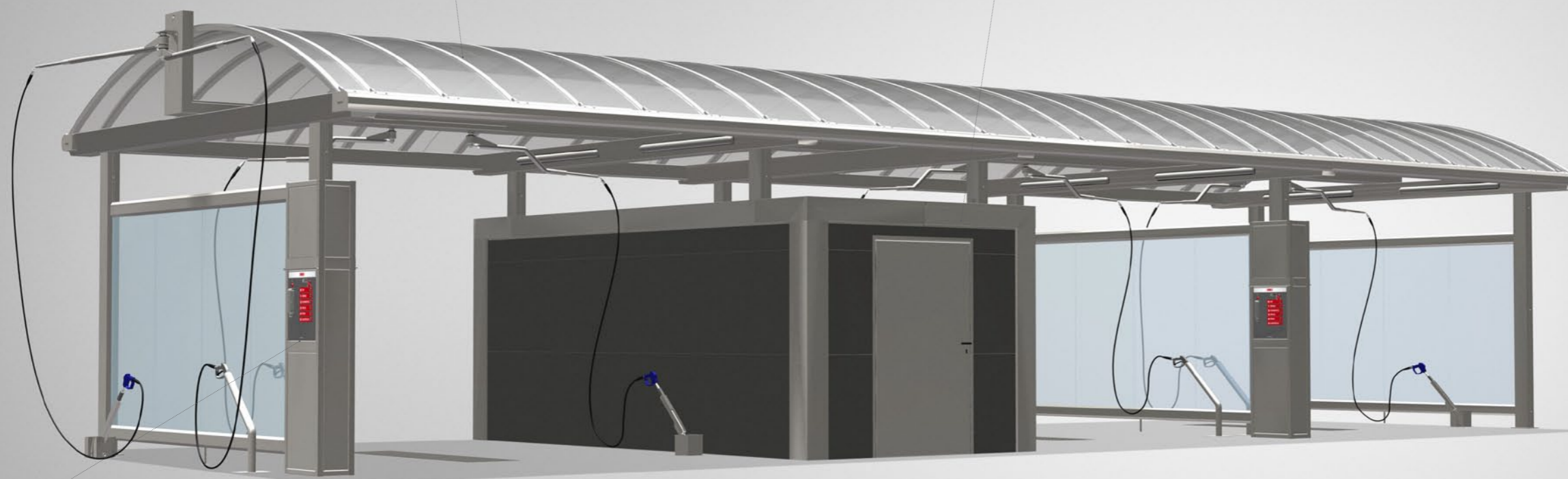
Construction:

- High-quality look:
 - Modern and completely in stainless steel
 - Polycarbonate transparent UV-proof roof
 - Stainless steel support pillars
 - Tinted and hardened (vandal proof) glass separation walls available in different colours



Engine room:

- All machines and devices, as well as the storage tanks and money-changer have been placed and mounted in a burglary safe engine room
- Self-supporting construction in micro-rib sandwich panels
- Entrance through a 1,10 m door with 3-point lock
- The engine room is equipped with a well for rainwater collection and for the frost protection system, and with an energy pit for the energy supplies
- Splash-proof TL-lightning



CUSTOM-BUILT

Made-to-measure is one of the majors trumps of DiBO:

- Own design
- Existing building
- Own house style
- ...



Operation:

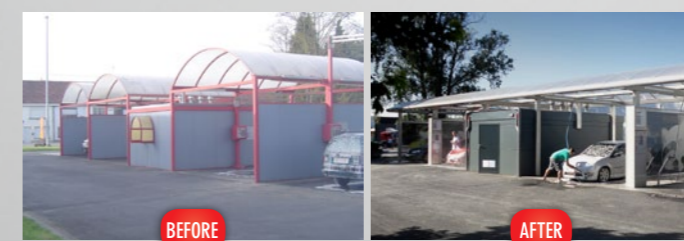
- Stainless steel front panel
- The wash programmes are activated by touch control
- Digital display reading

NEW 2000 D4

The operation consoles have been integrated into the support pillars of the building

NEW 2000 D5

Detached rectangular control console with one- or two-sided control panel



Renovation works:

- Renovation, extension or modernization of the existing self-service car wash
- Renovation of the wash installation in use
- Rebuilding of the floor in the washing places by installing epoxy floors
- ...

SELF-SERVICE CAR WASH

GUIDANCE, CONSULTANCY & PROJECT REALISATION

WASHING TECHNOLOGY NEW 2000

The wash system is the heart of every self-service car wash. With the help of its own R&D department DiBO is able to implement the most modern washing techniques at all times. Concerning washing technology, every self-service car wash is built up from several components. The pump installations and the PLC-drive are designed and built in the DiBO factory. DiBO sets great store on the quality of the applied washing techniques in view of the maximum output of the self-service car wash.

Wash programmes:

Standard with 7 wash programmes, which the client can fill in according to his wish and can expand optionally.

- Stop
- High pressure pre-wash
- Foam lance/brush
- Rinsing
- Hotwax
- Polishing
- Insect remover
- Motor cleaner

Central coin transport:

- The coins and tokens of the operation boxes are transported to the central safe. The interval of transport is determined by the PLC-command.
- Coins are counted by the management system and registered at value.



MANAGEMENT SYSTEM

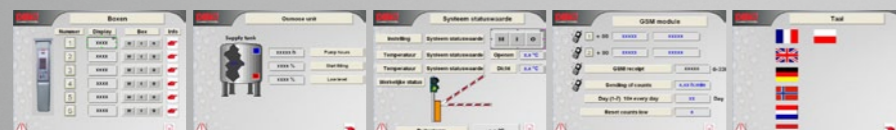
A communication system which allows to operate the entire car wash by making use of a touch screen terminal. It is possible to connect the touch screen terminal with a local PC, for optimal management of the car wash. Access is provided to various menus through 2 password levels. The first level is for the manager, the second for the owner.

- Working hours of the installation
- Daily receipts
- Monthly totals
- Possible alarms
- Resetting of the alarms
- Price settings
- Time settings of the wash programmes
- Activation times for the illumination
- etc



Mobile phone communication

All data is sent in a text message to the owner of the car wash by means of a mobile phone modem.



TOUCH SCREEN

Standard:

- Ca. 70 different screen pages
- Ethernet connection

Heating system:

For the heating of the wash water and the optional floor heating:

- Choice between boiler on gas, diesel or electric



Multiple pump unit:

- In function of the number of washing places the car wash is driven by a multiple pump unit built on a powder coated steel base frame.



Wax & Shampoo system:

- The dosage pumps provide an optimal product dose
- The product percentages are adjusted by means of the touch screen
- Chemical products are sucked from a central storage tank
- Up to 3 dosage pumps per high pressure pump, mounted on the frame of the base unit
- Client can choose shampoo, wax, engine cleaning, bug-remover, etc.

Foaming system:

A foaming system, independent of the high pressure installation, that makes sure that a super foam stays on the car like a thick layer, in order for the chemicals to affect the dirt for 100%.



Frost protection:

Different systems exist for frost protection, dependent of the necessary protection and the needed outside temperature, a particular system can be chosen. Contributory is the use or reuse of the water. Can be combined with floor heating.

- Closed circuit: reuse of the flowing water
- Open circuit



Reverse osmosis:

To prevent traces left behind after drying, filtered water that has been demineralized is used. The reverse osmosis system is mounted on the base frame of the high pressure installation.

Water softener:

For a better washing quality and a longer life span of the washing installation. The softener reduces the proportion of lime in the tap water.

SELF-SERVICE CAR WASH

GUIDANCE, CONSULTANCY & PROJECT REALISATION

SBH-E UNIT

A modular system on the basis of the SBH-E hot water high pressure unit.

Standard:

- Control command with 3 programmes (rinsing, shampoo and wax)
- 2 dosage pumps
- Electrically heated



- Control panel with:
 - 3 programmes
 - 4 programmes
 - 7 programmes
- Mechanic coin selection
- Electronic coin selection
- Various swing arms
- Various lance holders



Operation:

Glass wall with integrated control panel can be applied everywhere irrespective of the type of building

ACCESSORIES

Besides the technique and the car wash building, we also offer and install all necessary peripheral equipment for an optimal client service of the self-service car wash.



Money changer:

Digital money change machine with different possibilities.

- Change notes and coins:
 - Into tokens
 - Into Eurokeys
 - Pre-paid cards
 - Recharge keys and cards
- Receipts
- Manage promotions
- ...



Vacuum cleaners:

- Stainless steel housing
- Operation panel with coin inserter and control of the working hours
- Double or single design



Choice between different payment methods:



By coins



By tokens



By pre-paid card



By Eurokey



Various:

- Vacuum swing arms
- Carpet-beaters in stainless steel
- Dustbin
- Hot water taps (only available in BE)
- ...



Swing arms:

The high pressure hoses are mounted on stainless steel swing arms. These arms are available in different models:

- Single
- Double
- Wall fixation
- Ceiling fixation

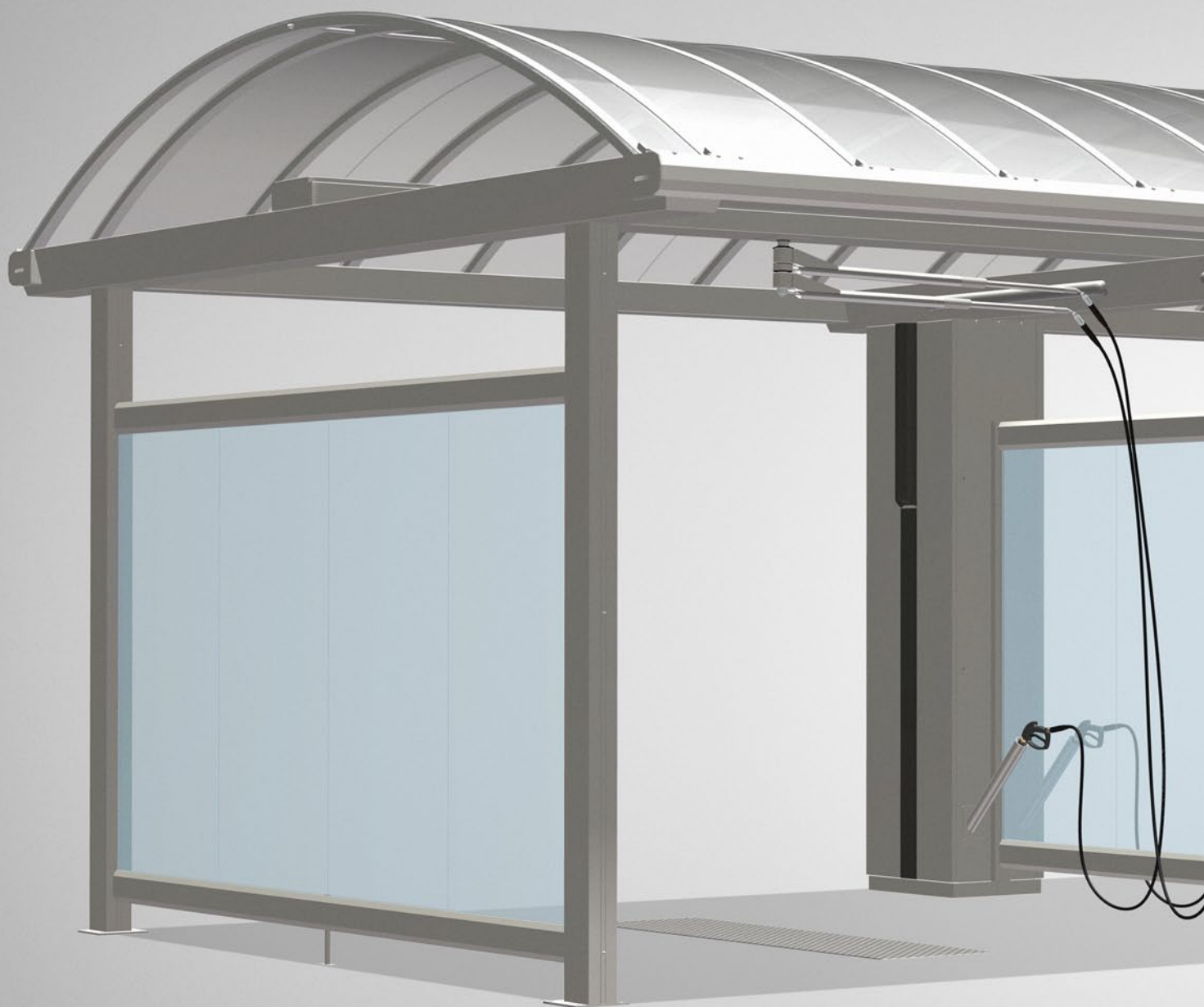


Drying system



Lances, lance and brush holders:

- Selected in function of the chosen wash programmes
- Lances have an ergonomic design



DiBO NV EXPORT
Hoge mauw 250
2370 Arendonk
T +32 14 67 22 51
F +32 14 67 25 10
info@dibo.com

DiBO Car- & Truckwash NV
KMO-park Kapelleveld
Sint-Jansveld 7
2160 Wommelgem
T +32 3 235 60 80
F +32 3 235 60 90
Sales.carwash@dibo.com



DiBO Nederland BV
Industrieweg 7
4181 CA Waardenburg
T +31 418 65 21 44
F +31 418 65 16 05
sales@dibo.nl



DiBO GmbH
Schillerstrasse 13a
49811 Lingen/Ems
T +49 591 610 96 68
F +49 591 610 96 54
sales.deutschland@dibo.com



www.dibo.com